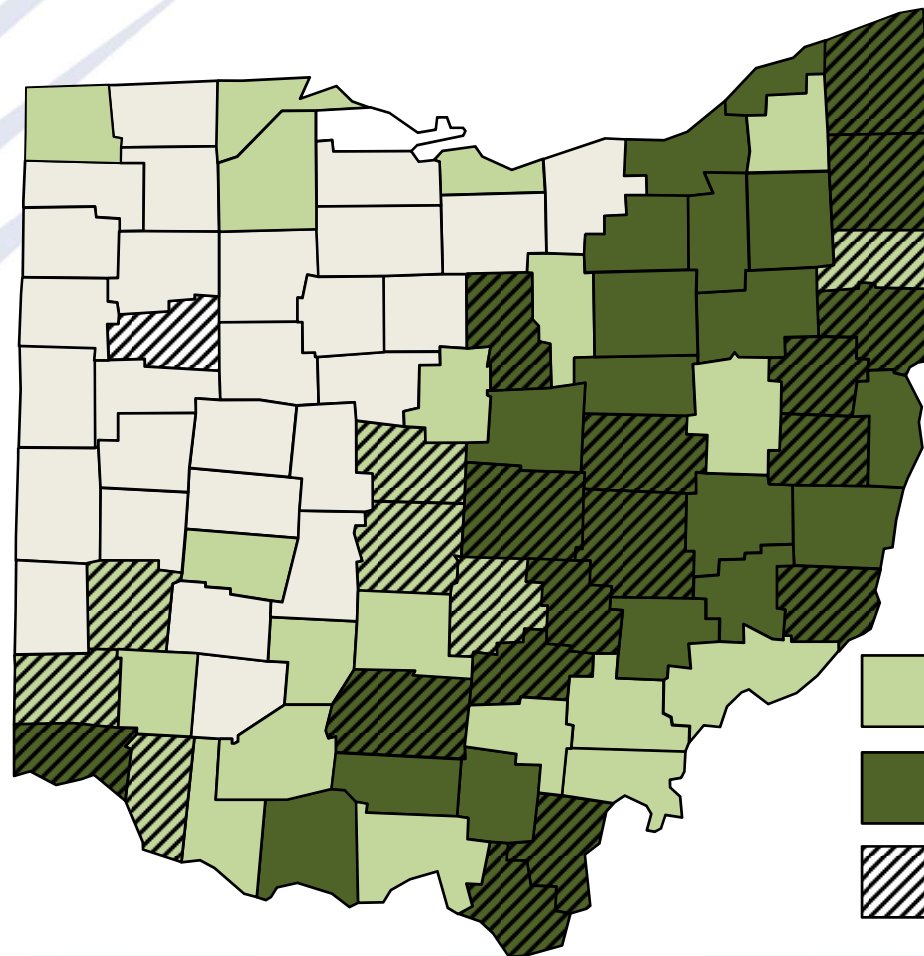
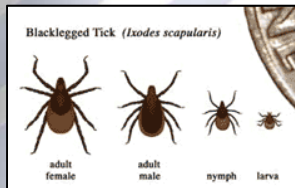





Ixodes scapularis & Lyme disease in Ohio

2014



Number of Counties :
 Tick Present - 59
 Tick Established* - 33
 Lyme disease endemic - 24

-  *I. scapularis* present
-  *I. scapularis* believed established*
-  Lyme disease endemic**



***CDC criteria for “established” populations :**
 at least 6 ticks or 2 life stages identified

**** known Lyme disease risk:**
 2 or more lab confirmed human cases with local exposure
 Or
 Infected ticks have been confirmed