

# Emergency Department (ED) Visits Due to Drug Overdoses:

## Weekly Surveillance Report for Jun 19 - Jun 25, 2017

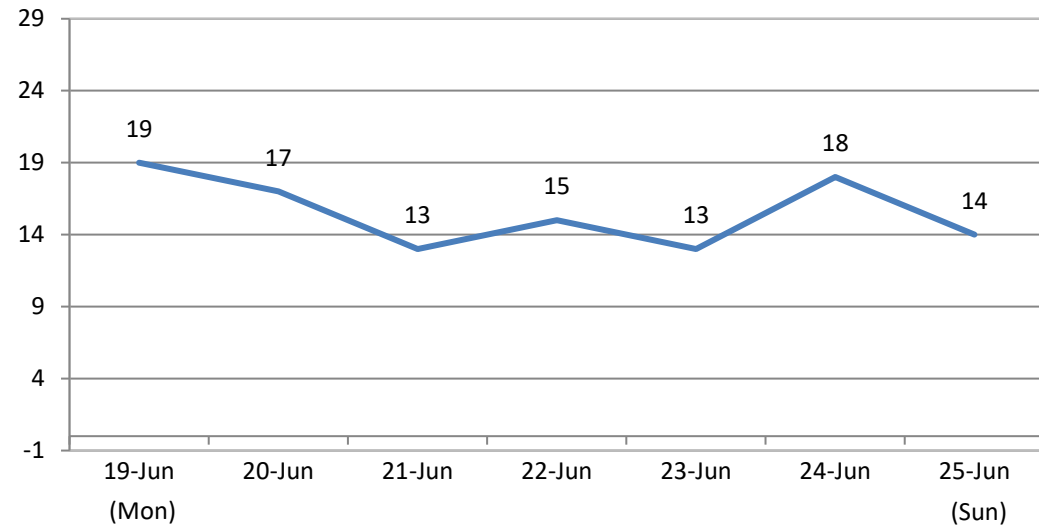
Week Ending Date: 6/25/2017

Total Estimated ED Visits Due to Drug Overdose for the week 109

### Estimated ED Visits Due to Drug Overdoses by Zip Code (Top 10)

Zip	Number	Percent
43207	10	9.2%
43211	7	6.4%
43232	7	6.4%
43224	7	6.4%
(blank)	5	4.6%
43219	5	4.6%
43227	4	3.7%
43147	4	3.7%
43209	3	2.8%
43204	3	2.8%
<b>Total</b>	<b>109</b>	<b>100%</b>

### Est. ED Visits Due to Drug Overdoses by Day, Jun 19 - Jun 25, 2017



### Estimated ED Visits Due to Drug Overdoses by Gender

Gender	Number	Percent
F	52	47.7%
M	57	52.3%
<b>Total</b>	<b>109</b>	<b>100.0%</b>

### Estimated ED Visits Due to Drug Overdoses by Age Group

Age Group	Number	Percent
<18	7	6.4%
18-34	53	48.6%
35-49	38	34.9%
50-64	9	8.3%
65 and over	2	1.8%
<b>Total</b>	<b>109</b>	<b>100.0%</b>

Notes: Drug overdose data is retrieved from the Ohio's EpiCenter surveillance tool and analyzed by Columbus Public Health, Office of Epidemiology. "Overdose" cases include all emergency visits that were classified as drug related at hospitals in Franklin County. Overdose cases were further refined by selecting only those cases where the reason for visit notes included the terms "OD" or "overdose." Visits for withdrawal, detox or overdoses due to certain medication such as insulin were removed where identified. Zip codes refer to the zip code of residence of the patient visiting the ED. It is important to note that these are estimated figures rather than a full and final count because initial diagnoses and/or details of a particular case may change from a patient's initial examination to his or her final outcomes, and because the limited case notes field in EpiCenter may not include all details necessary to firmly classify a case as an overdose. It is also important to note that case notes available through EpiCenter rarely identify the specific drug or drugs involved in an overdose. Therefore the figures here can be associated with any drug, not just heroin and/or fentanyl. Finally, numbers are subject to change as updates are made within the hospital medical records and subsequently within the EpiCenter application.

# Columbus Fire Emergency Medical Services (EMS) Patients with Drug Overdose

## Weekly Surveillance Report for Jun 19 - Jun 25, 2017

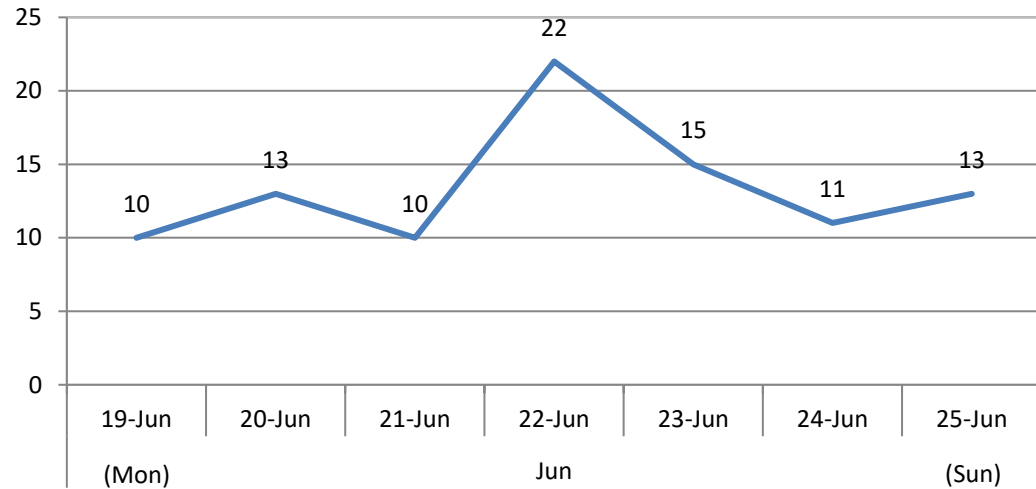
Week Ending Date: 6/25/2017

Total Estimated EMS Patients with Drug Overdose for the week 94

### Estimated EMS Patients with Drug Overdose by Zip Code (Top 10)

Zip	Number	Percent
43223	8	8.5%
43204	8	8.5%
43222	7	7.4%
43215	7	7.4%
43207	7	7.4%
43211	6	6.4%
43229	6	6.4%
43205	5	5.3%
43203	4	4.3%
43214	4	4.3%
<b>Total</b>	<b>94</b>	<b>100%</b>

### Est. EMS Patients with Drug Overdose by Day, Jun 19 - Jun 25, 2017



### Estimated EMS Patients with Drug Overdose by Gender

Gender	Number	Percent
F	42	44.7%
M	52	55.3%
<b>Total</b>	<b>94</b>	<b>100.0%</b>

### Estimated EMS Patients with Drug Overdose by Age Group

Age Group	Number	Percent
<18	3	3.2%
18-34	46	48.9%
35-49	31	33.0%
50-64	13	13.8%
65 and over	1	1.1%
<b>Total</b>	<b>94</b>	<b>100.0%</b>

Notes: Columbus Fire EMS data were received from Columbus Division of Fire. Data were limited to include EMS patients with the following impressions: Drug Abuse, IV Drug Abuse, Overdose, and Poisoning. Zip codes refer to the zip code of incidence/site of response. Data was analyzed by Columbus Public Health, Office of Epidemiology. Figures can be associated with any drug, not just heroin and/or fentanyl.